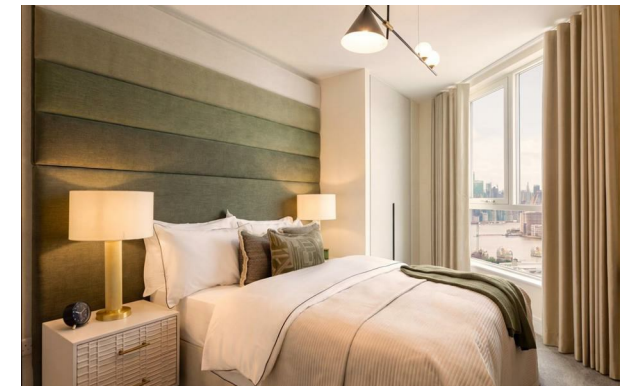


# Hammonds



## 17 Wandsworth Mills, Wandsworth, SW18 1TH

£1,220,000

- Spacious 2 bedrooms
- 1 reception room
- Contemporary design
- Viewing recommended
- Modern 1 bathroom
- Built in 2026
- Ideal for families
- New build house
- 1,010 sq ft area
- Close to amenities

57 Bow Rd, London, E3 2AD  
02089802226

[sales@hammonds-estates.co.uk](mailto:sales@hammonds-estates.co.uk)  
[www.hammonds-estates.co.uk](http://www.hammonds-estates.co.uk)

## Directions

## Viewings

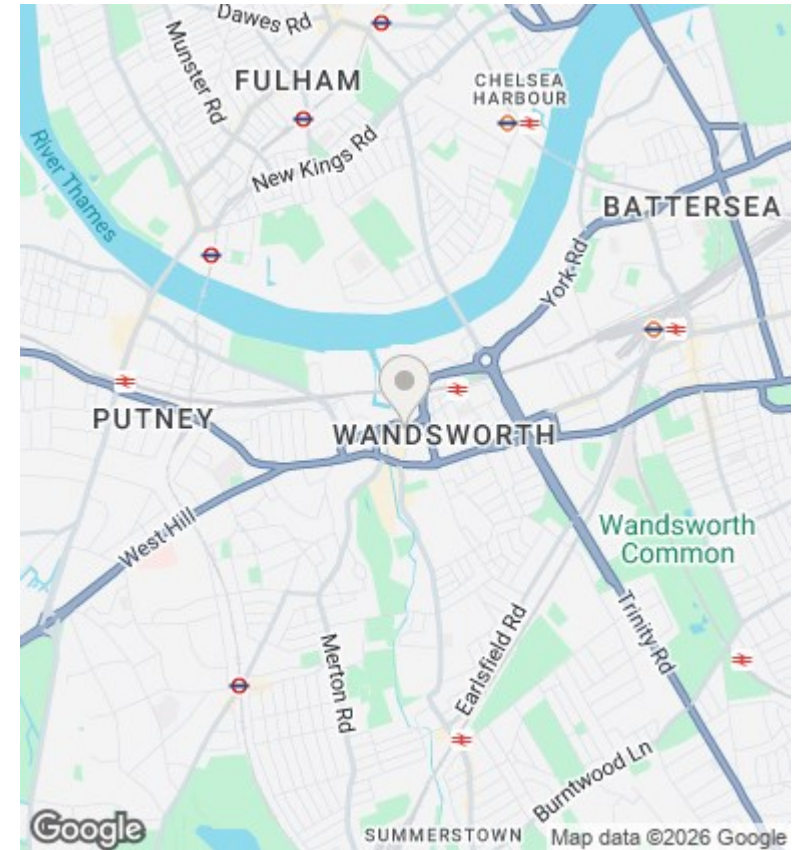
Viewings by arrangement only. Call 02089802226 to make an appointment.

## Council Tax Band

C

## EPC Rating:

B



Energy Efficiency Rating		Current	Potential
<i>Very energy efficient - lower running costs</i>			
(92 plus) <b>A</b>			
(81-91) <b>B</b>		82	
(69-80) <b>C</b>			
(55-68) <b>D</b>			
(39-54) <b>E</b>			
(21-38) <b>F</b>			
(1-20) <b>G</b>			
<i>Not energy efficient - higher running costs</i>			
<b>England &amp; Wales</b>		EU Directive 2002/91/EC	